

[Home](#) | [List](#) | [New](#) | [Edit](#) | [Delete](#) | [Reply](#) | [Duplicate](#) | [Find](#) | [Config](#) | [Help](#)

Message ID: 40 Entry time: 12/21/2020 12:37:09 PM

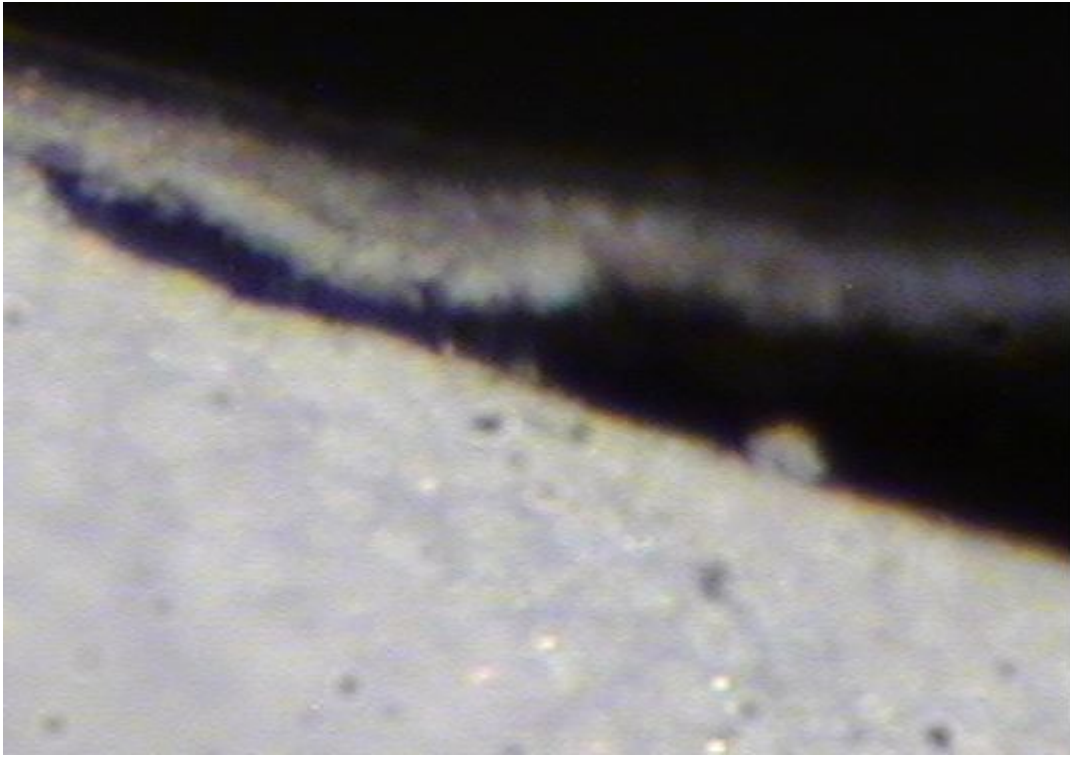
Experiment Date:	2020 12 21
Duration (Days):	
User:	Zdravko Siketi&#263;
Accelerator:	Tandetron
Beam Line:	Old uProbe
Project:	RADIATE TA
Experiment Title:	MeV TOF-SIMS
Beam:	5 MeV Si4+
Method:	

Spectra No.	Sample	Comments
		<p>N.B.:</p> <p>1. Equipement is working overnight 24h/day (TDT sputter ion source Cs self-cleaning)</p> <p>2.uProbe quadrupoles working overnight (for stable focus in high current mode)</p> <p>Vchopp.=+-500 V</p> <p>Me=92.4 A</p> <p>Ox=90.9 A</p> <p>SS=10x1 =(940*770 um^2))</p> <p>Mapirati K+ za lociranje uzorka (uzorci su zaljepljeni na C-tape)</p>
2012112	LPA, No.3	<p>Vext=+5 kV</p> <p>Mutant, trebalo bi vidjeti Phytic acid (m=660 Da)</p> <p>U spektru se ne vidi ta masa.</p> <p>Snimana su 2 podrucja (Cotyledon (veci dipo mape) i ljuska (horizontalna "crta"))</p>
2012113	LPA, No.3	<p>Samo Cotyledon</p> <p>U spektru se ne vidi Phytic acid (m=660 Da)</p> <p>Vext.=+5 kV</p>
2012114	LPA, No.3	<p>Samo Cotyledon( kao i u 2012113)</p> <p>Vext=-5 kV (negative mode)</p> <p>U spektru se ne vidi Phytic acid (m=660 Da)</p>
2012115	LPA, No.3	Seed coat

		U spektru se ne vidi Phytic acid (m=660 Da) Vext.=+5 kV
2012116	LPA, No.3	Seed coat, ROI scan U spektru se ne vidi Phytic acid (m=660 Da) Vext.=+5 kV
2012117	LPA, No.2	Samo cotyledon. Neravan uzorak U spektru se ne vidi Phytic acid (m=660 Da) Vext.=+5 kV
2012118	lpa, No.2	Samo cotyledon. Neravan uzorak U spektru se ne vidi Phytic acid (m=660 Da) Vext.=-4 kV Charging
2012119	LPA, No.2	Seed coat. U spektru se ne vidi Phytic acid (m=660 Da) Vext.=+5 kV
2012120	LPA, No.1	Samo cotyledon. U spektru se ne vidi Phytic acid (m=660 Da) Vext.=-4 kV Charging..
2012121	LPA, No.1	Samo cotyledon. U spektru se ne vidi Phytic acid (m=660 Da) Vext.=+5 kV
2012122	LPA, No.1	Seed coat. U spektru se ne vidi Phytic acid (m=660 Da) Vext.=+5 kV

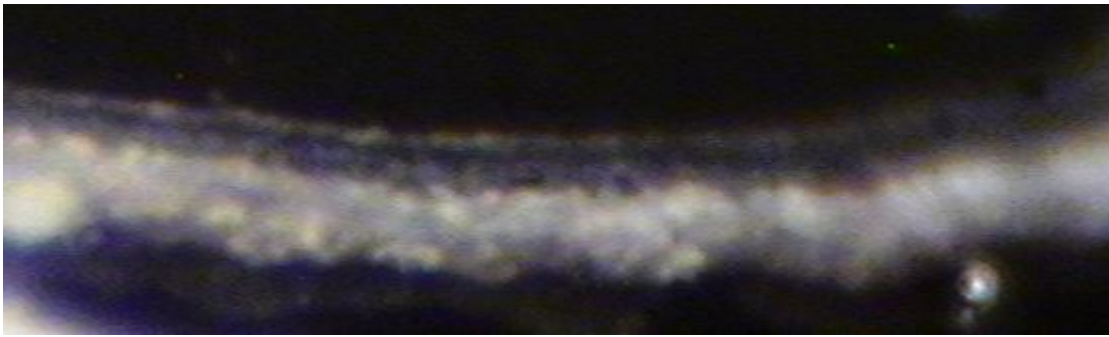
Attachment 1:

[2012112.JPG](#) 27 kB | [Hide](#) | [Hide all](#)



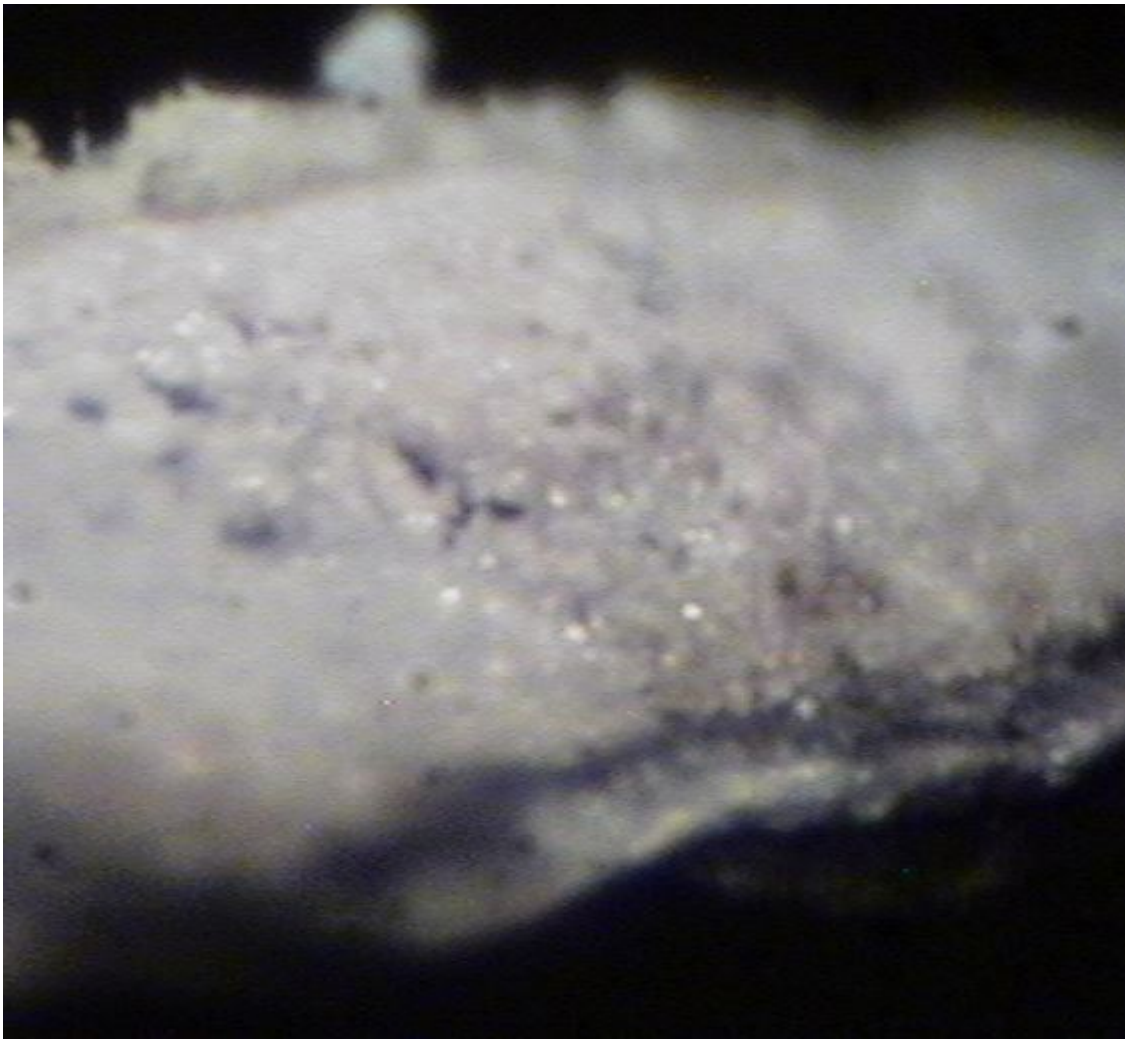
Attachment 2:

[2012116.JPG](#) 18 kB | [Hide](#) | [Hide all](#)



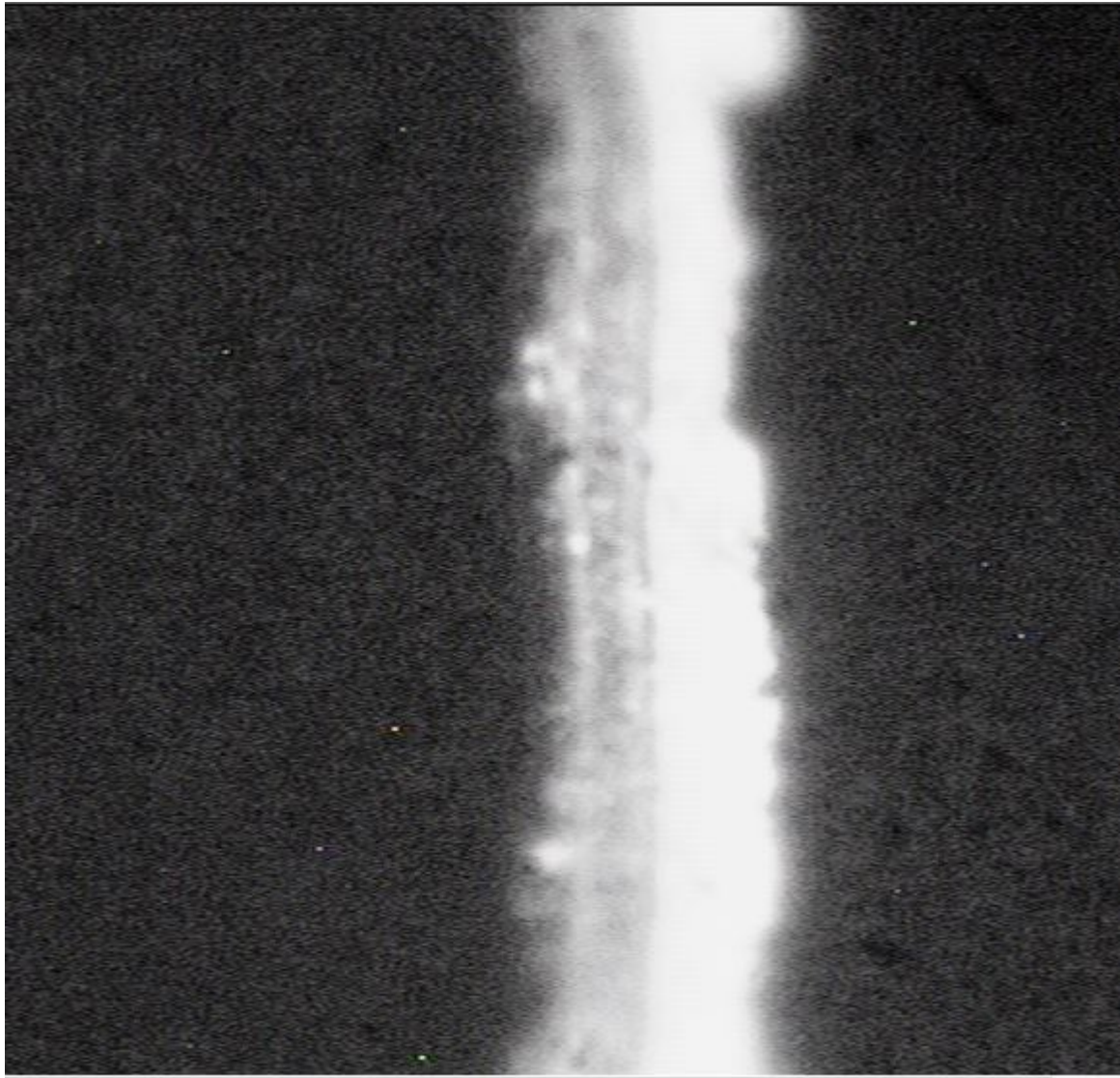
Attachment 3:

[2012119.JPG](#) 38 kB Uploaded 12/21/2020 3:39:25 PM | [Hide](#) | [Hide all](#)



Attachment 4:

[2012122.JPG](#) 71 kB Uploaded 12/21/2020 5:40:21 PM | [Hide](#) | [Hide all](#)



ELOG V3.1.4-a04faf9f